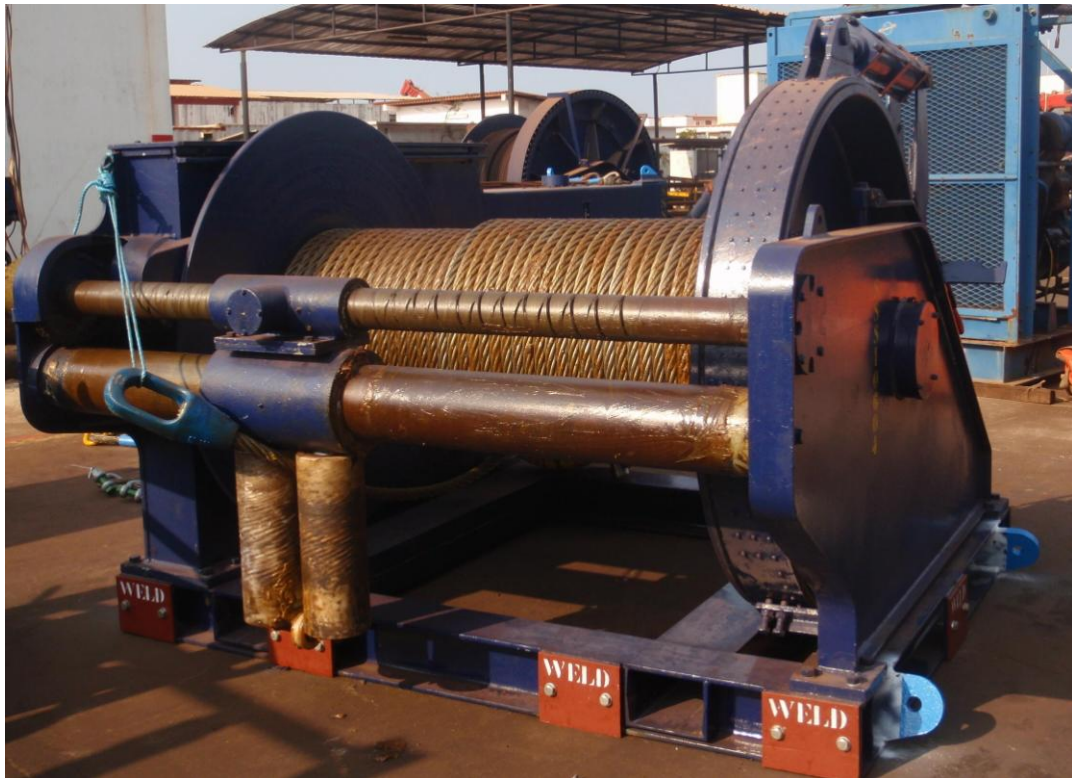


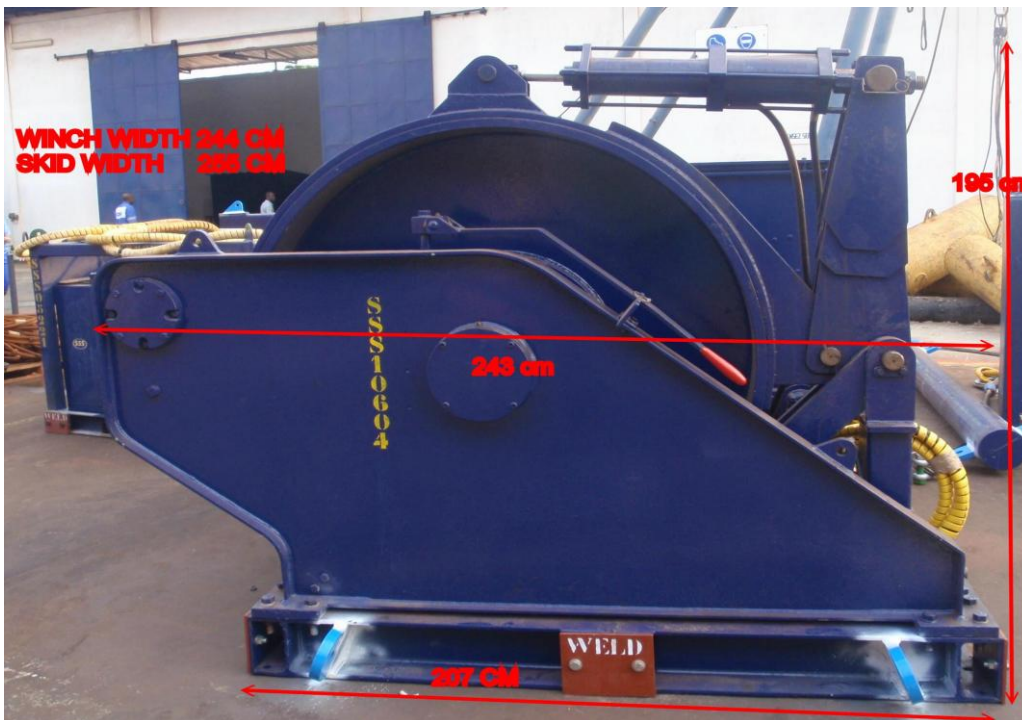
# NORLAU type 350 HYDRAULIC WINCH

## FEATURES



- Automatic fail safe hydraulic brakes
- Pull on 1. layer : 350 kN
- Pull on top layer : 155 kN
- Hauling speed 1. layer : 10 m/min
- Hauling speed top layer : 21 m/min
- Drum flange depth : 455 mm
- Drum core diameter : 610 mm
- Wide of drum : 1696 mm
- Drum capacity :

Rope Diameter $D$ (mm)	38
Total Max Length Of Rope Within Rim (m)	1788,01
Total Length Of Rope With One Layer Clear Of Rim (m)	1580,21
Total Length Of Rope With Two Layers Clear Of Rim (m)	1383,07



**Separate Hydraulic control skid:**



- HPU max Hydraulic pressure 220 bar
- Oil requirement : 252 l/min
- Control valve Hydranor 6MBA-320-1B-7G
- Brake Cylinder Basic
- Gross weight 6.6 tons ( without rope)

**WE CAN SUPPLY HYDRAULIC POWER UNITS TO SUIT**

[www.ois-group.com](http://www.ois-group.com)