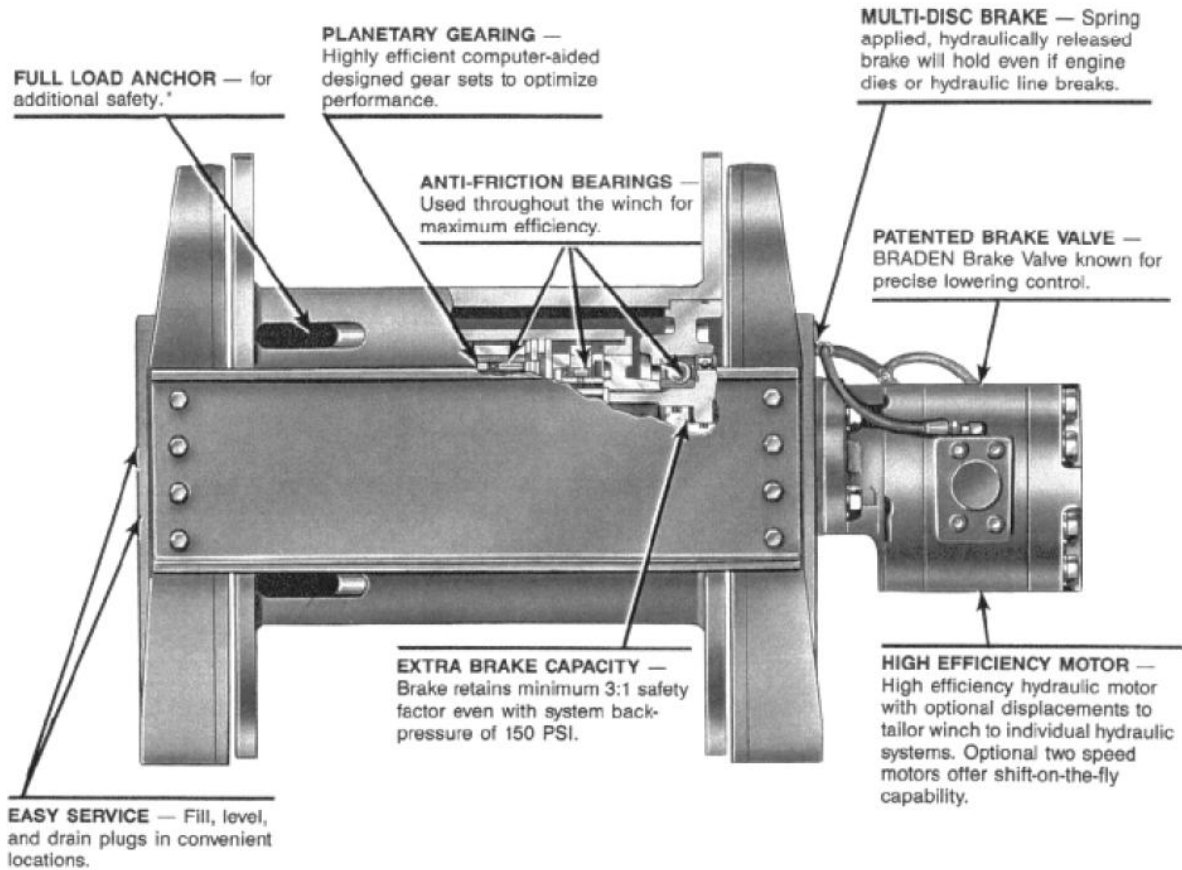


HYDRAULIC WINCH BRADEN CH 175A

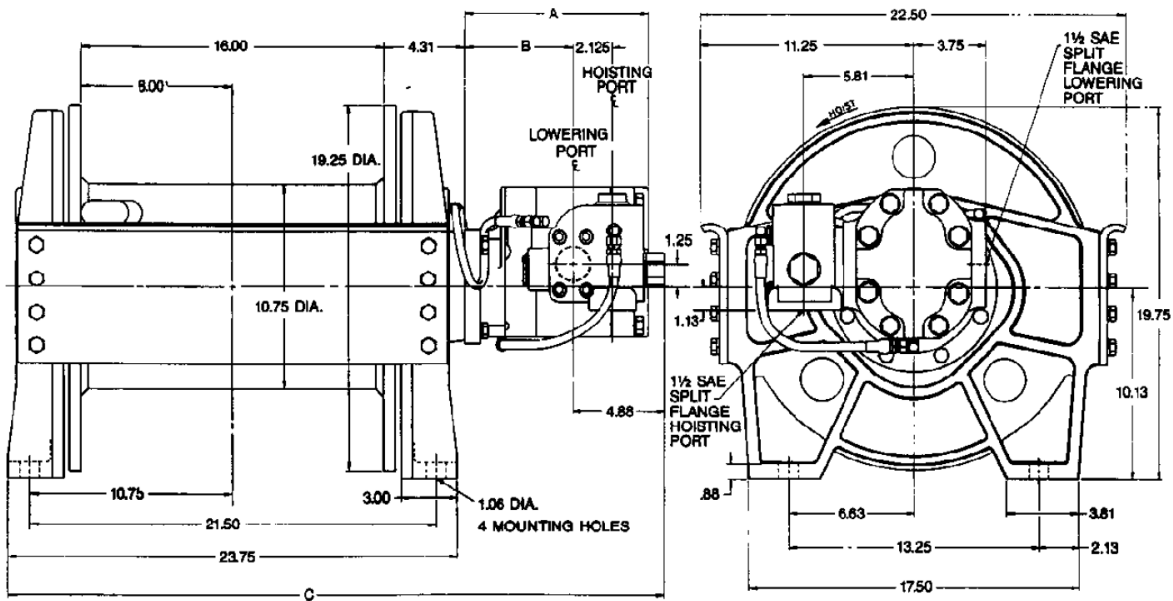


FEATURES :

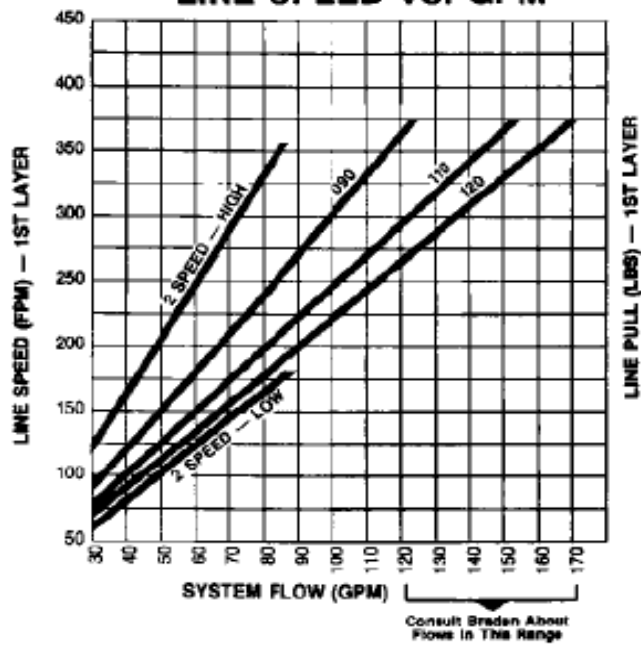
- SWL 7,6 ton
- Multi-disc Brake - Spring applied and hydraulically released
- Anti-friction bearings for maximum efficiency
- Multi-stage planetary reduction
- Gear Ratio 23
- Hydraulic motor size 120
- Drum Size 01
- Skid mounted for transport and fastening
- Gross weight 500 kg



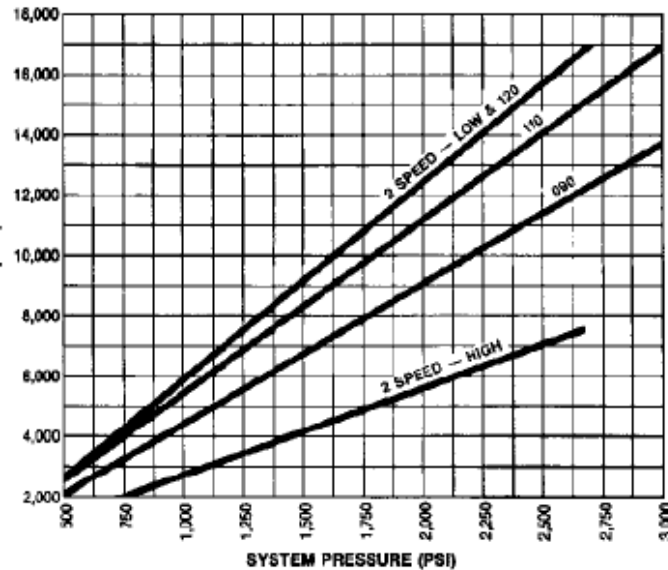
*Consult Installation, Maintenance and Service Manual for proper installation.



LINE SPEED VS. GPM



LINE PULL VS. PSI



SINGLE SPEED 23:1 RATIO WEIGHT 01 DRUM 710 LBS.

ROPE SIZE (IN.)	LAYER	090 MOTOR 9.02 CU. IN. DISP. 3000 PSI @ 125 GPM		110 MOTOR 11.03 CU. IN. DISP. 3000 PSI @ 155 GPM		120 MOTOR 12.03 CU. IN. DISP. 2850 PSI @ 170 GPM		ROPE CAPACITY (FEET)
		LINE PULL (LBS.)	LINE SPEED (FPM)	LINE PULL (LBS.)	LINE SPEED (FPM)	LINE PULL (LBS.)	LINE SPEED (FPM)	
9/16	1	13,420	371	16,880	377	17,500	378	84
	2	12,210	408	15,350	414	15,915	416	177
	3	11,195	445	14,080	452	14,595	454	278
	4	10,340	482	13,000	489	13,480	492	387
	5	9,600	519	12,075	527	12,520	529	505
	6	8,965	556	11,270	564	11,690	567	631
5/8	1	13,345	373	16,785	379	17,500	381	76
	2	12,025	414	15,125	420	15,765	423	161
	3	10,940	456	13,760	462	14,345	465	254
	4	10,035	497	12,625	504	13,160	506	355
	5	9,270	538	11,660	545	12,155	548	465
	6	8,615	579	10,835	587	11,295	590	583
3/4	1	13,200	378	16,600	383	17,500	385	64
	2	11,680	427	14,690	433	15,480	435	137
	3	10,470	476	13,170	483	13,880	485	218
	4	9,490	525	11,935	533	12,580	536	307
	5	8,675	575	10,910	583	11,500	586	405

MINIMUM GPM RECOMMENDATION FOR SMOOTH OPERATION*

- MOTOR 120 — 28 GPM
- MOTOR 110 — 27 GPM
- MOTOR 090 — 24 GPM
- MOTOR 127 — 24 GPM

*RECOMMENDED MINIMUM SYSTEM FLOW SHOULD BE 2X THESE VALUES.