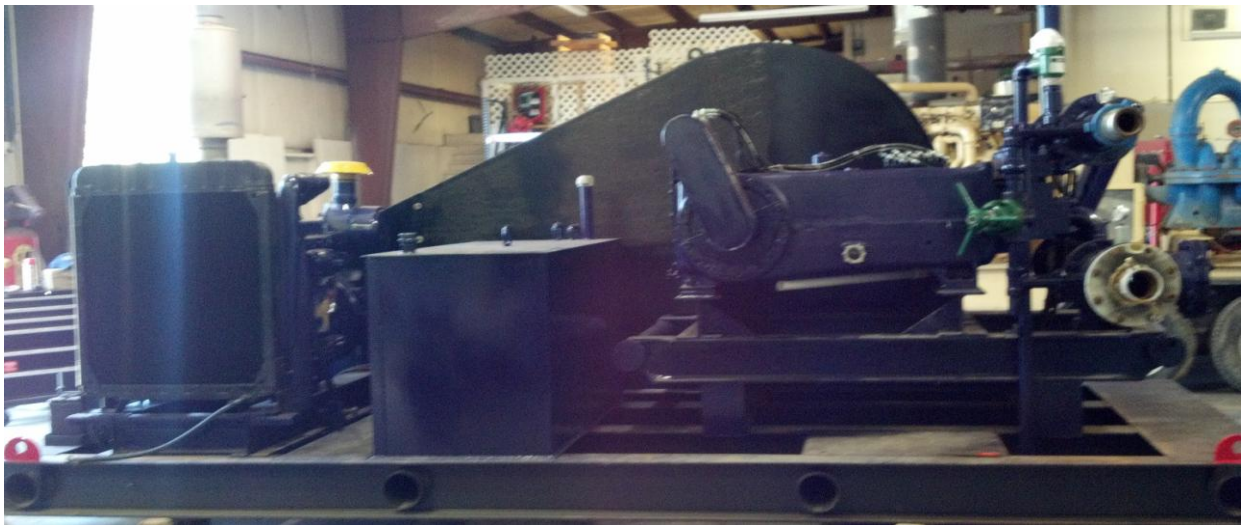
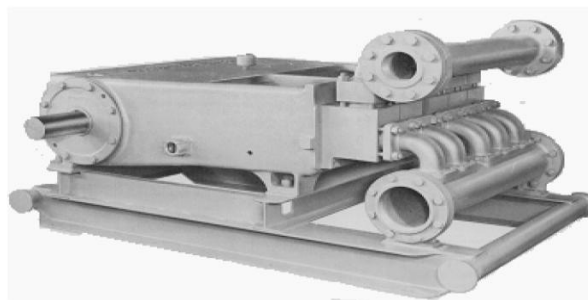


OIS DIESEL DRIVEN Gardner Denver Quintuplex PUMP 3.25 “ plungers



GD-300Q (QAF) QUINTUPLEX CONTINUOUS DUTY PLUNGER PUMP

SPECIFICATIONS:
 Maximum BHP: 300 (224 kw)
 Maximum RPM: 370
 No. of Plungers: 5
 Stroke Length: 6 in. (152 mm)
 Plunger Load: 9,633 lbs. (4,378 kg)
 Discharge Hydrostatic Test Pressure
 LP – 2,100 psi (148 kg/cm2)
 MP – 4,600 psi (323 kg/cm2)
 HP – 7,500 psi (527 kg/cm2)
 Oil Capacity: 32 gal. (121 liters)
 Pump Weight: 8,035 lbs. (3,645 kg)



Shown with optional skid

PERFORMANCE RATINGS

Plunger Size		Maximum Pressure		Displacement per revolution		Gallons Per Minute/Liters at the following RPM:											
						175		200		250		300		350		370	
in.	mm	PSI	kg/cm2	gal.	liters	GPM	LPM	GPM	LPM	GPM	LPM	GPM	LPM	GPM	LPM	GPM	LPM
LP ALUMINUM BRONZE FLUID END (QAFA)																	
3.25	83	1160	82	1.078	4.080	189	714	216	816	270	1020	323	1224	377	1428	399	1510

ois-gabon@ois-group.com

ois-congo@ois-group.com



SubSea Solution

www.ois-group.com

8V-3150		1.0766					
Engine Speed	Pump Speed	GPM	Liter Per Min	BPD	PSI	Bar	Horsepower
1200	220	237	897	8110	1200	83	184
1300	238	256	971	8786	1200	83	199
1400	256	276	1046	9462	1200	83	215
1500	275	296	1121	10138	1200	83	230
1600	293	315	1195	10814	1200	83	245
1700	311	335	1270	11490	1200	83	261
1800	330	355	1345	12165	1200	83	276

- Caterpillar 3306 Mechanical engine, 330 hp @ 1800 RPM
 - Instrument panel
 - WTO- PTO for pump disconnect
-
- Pump Selection: Gardner Denver, QAF300, ceramic plungers 3.25”, delrin style valves with aluminum bronze fluid end.
 - Safety relief valve set at 1,440 PSI, TECO pin style
 - 5 – ¼” Extra heavy ball valves on valve discharge side to bleed of air
 - One PSI gauge 0 to 2000 PSI on high side of pump discharge, discharge to be routed to bottom of skid for safety reasons.
 - 4” Extra Heavy discharge with threaded connection, NPT
 - Bypass system for high line loads to allow slow pressure induction returned back to suction side
 - 8” Suction flange with 8-150 Flange
 - Suction gauge on Suction side to ensure 30 PSI on back side of pump
 - 6” Suction side tube
 - ½” Brass ball valve for suction side drain

ois-gabon@ois-group.com

ois-congo@ois-group.com